



ROUNDHOUSE

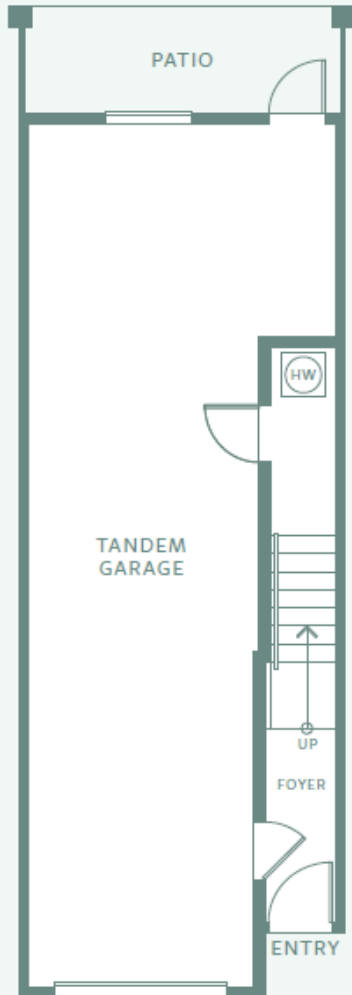
PLAN A/A1

3 BEDROOM | 2.5 BATHROOM

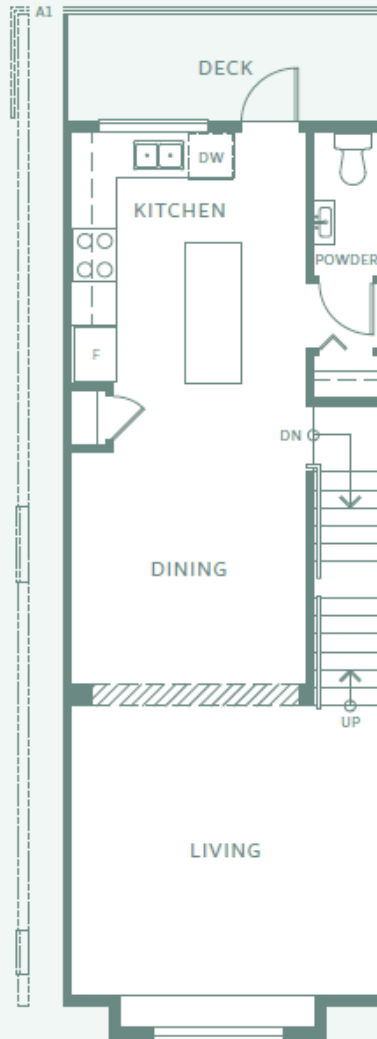
TOTAL 1,375 - 1,386 SQ FT

Call Trevor
604-761-1380

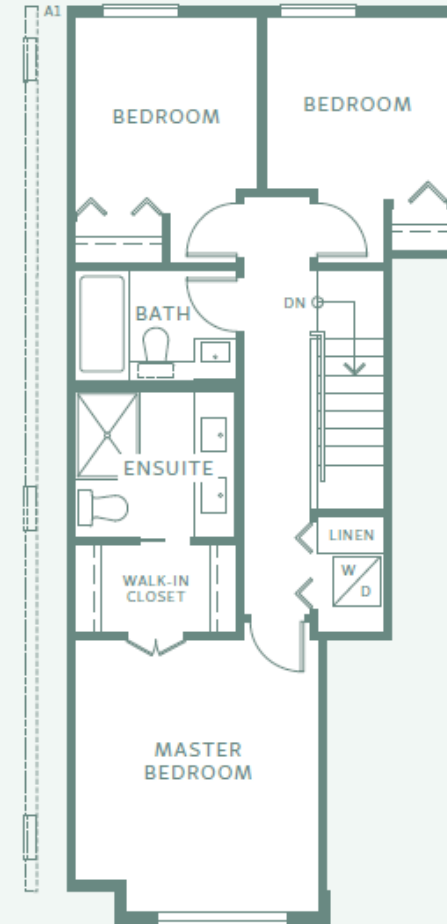
 **thetownhouseguy.ca**
...a fresh approach to real estate



LOWER FLOOR



MAIN FLOOR



UPPER FLOOR



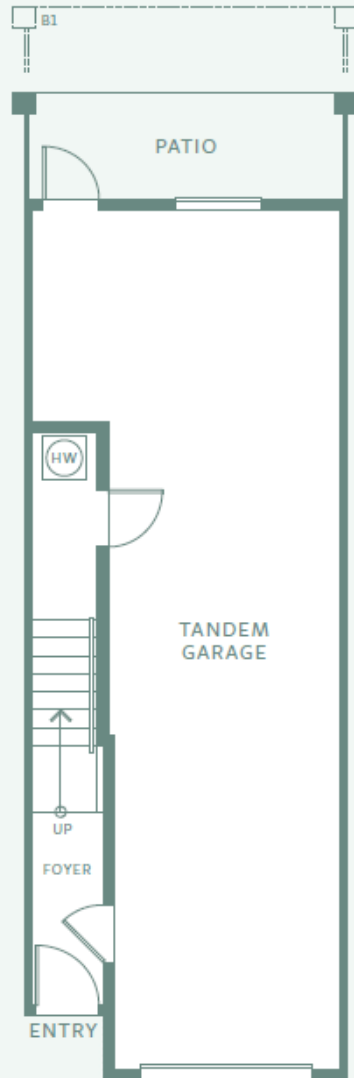
ROUNDHOUSE

PLAN B/B1

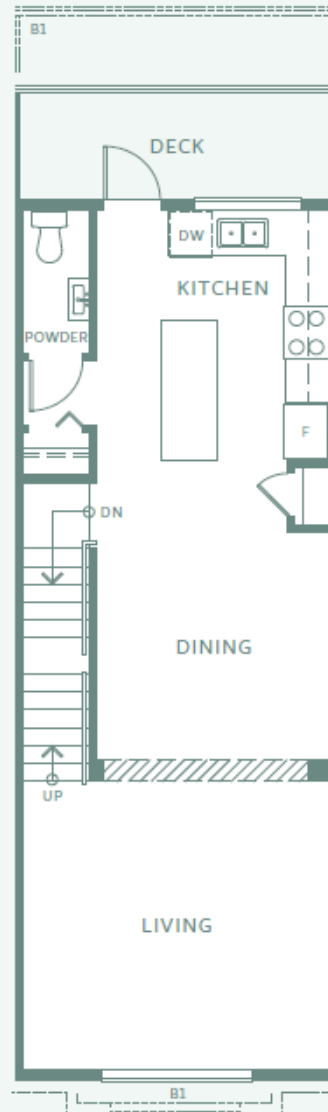
3 BEDROOM | 2.5 BATHROOM

TOTAL 1,357 - 1,367 SQ FT

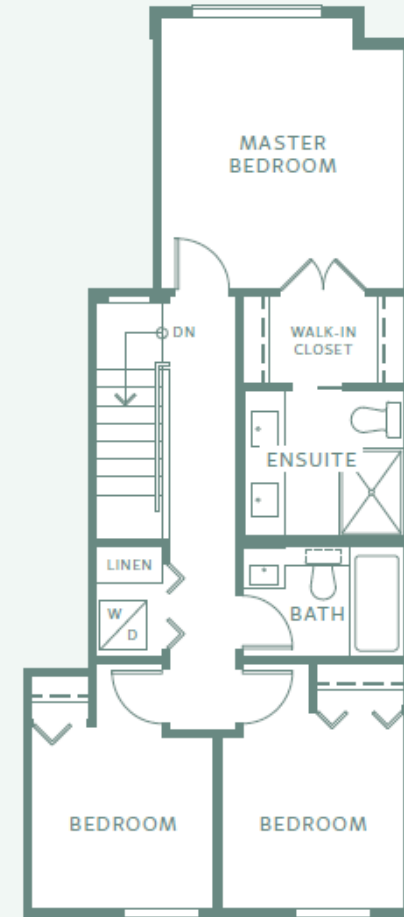
Call Trevor
604-761-1380



LOWER FLOOR



MAIN FLOOR



UPPER FLOOR

In our continuing effort to improve and maintain the high standard of The Roundhouse development, the developer reserves the right to modify or change plans, specifications, features and prices without notice. Materials may be substituted with equivalent or better at the developer's sole discretion. All dimensions and sizes are approximate and are based on Architectural measurements. As reverse and/or mirrored plans occur throughout the development, please see architectural plans. Renderings are an artist's conception and are intended as a general reference only. Please refer to disclosure statement for specific offering details. E&OE.



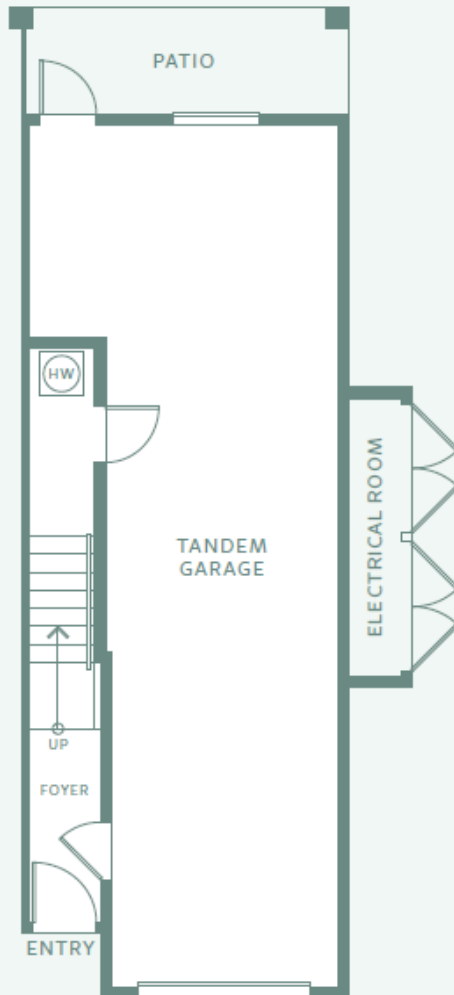
ROUNDHOUSE

PLAN C

3 BEDROOM | 2 BATHROOM
TOTAL 1,420 SQ FT

Call Trevor
604-761-1380

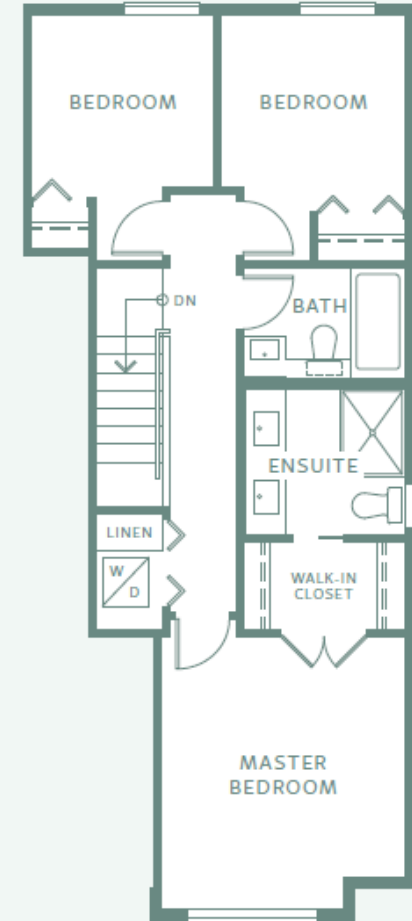
 **thetownhouseguy.ca**
...a fresh approach to real estate



LOWER FLOOR



MAIN FLOOR



UPPER FLOOR

In our continuing effort to improve and maintain the high standard of The Roundhouse development, the developer reserves the right to modify or change plans, specifications, features and prices without notice. Materials may be substituted with equivalent or better at the developer's sole discretion. All dimensions and sizes are approximate and are based on Architectural measurements. As reverse and/or mirrored plans occur throughout the development, please see architectural plans. Renderings are an artist's conception and are intended as a general reference only. Please refer to disclosure statement for specific offering details. E&OE.



ROUNDHOUSE

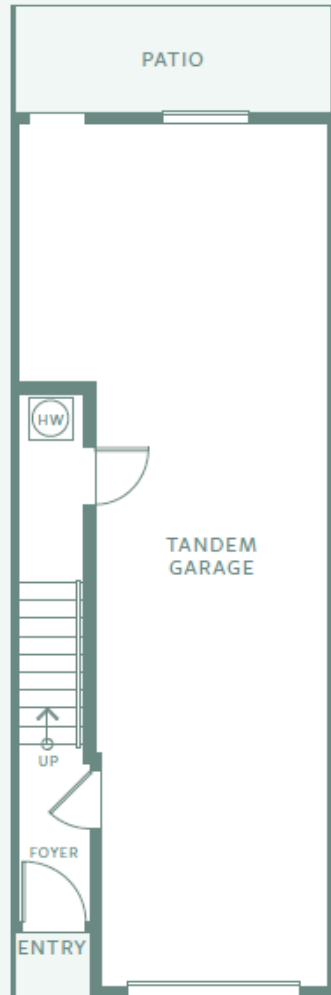
PLAN D

2 BEDROOM | 2 BATHROOM

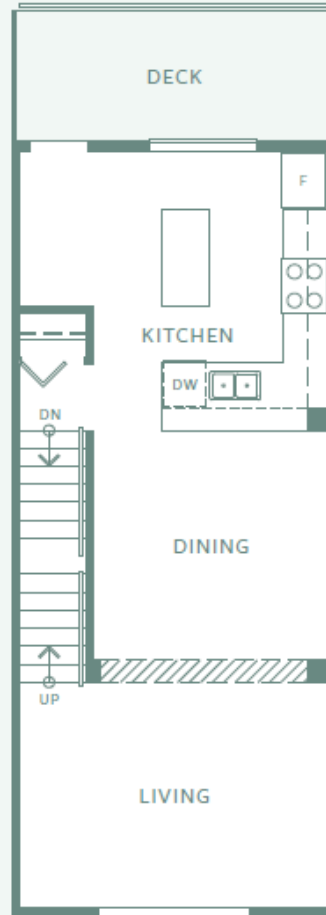
TOTAL 1,182 SQ FT

Call Trevor
604-761-1380

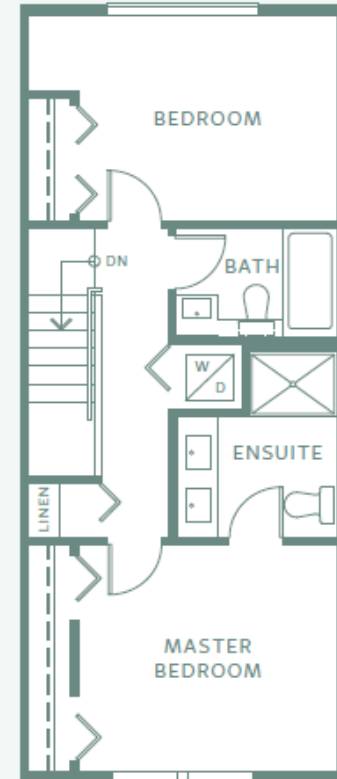
 **thetownhouseguy.ca**
...a fresh approach to real estate



LOWER FLOOR



MAIN FLOOR



UPPER FLOOR



ROUNDHOUSE

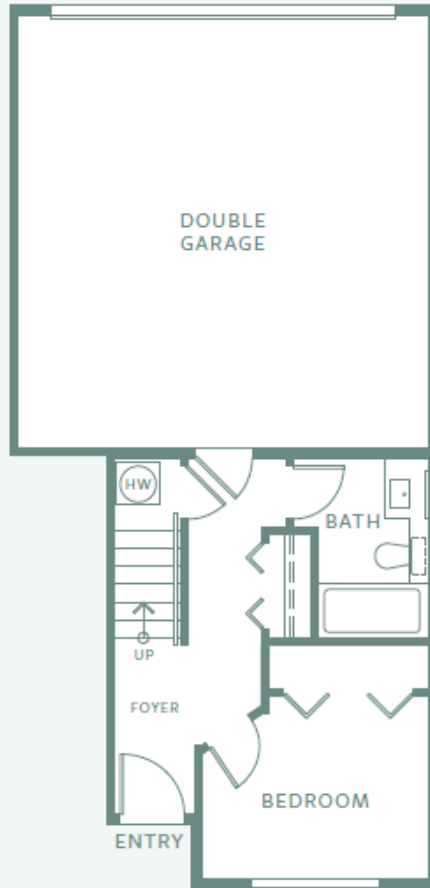
PLAN E/E1

4 BEDROOM | 3.5 BATHROOM

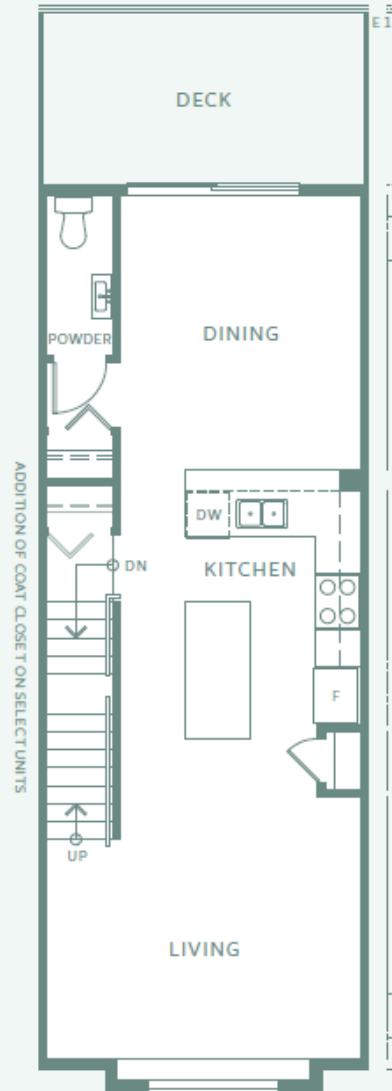
TOTAL 1,572 - 1,589 SQ FT

Call Trevor
604-761-1380

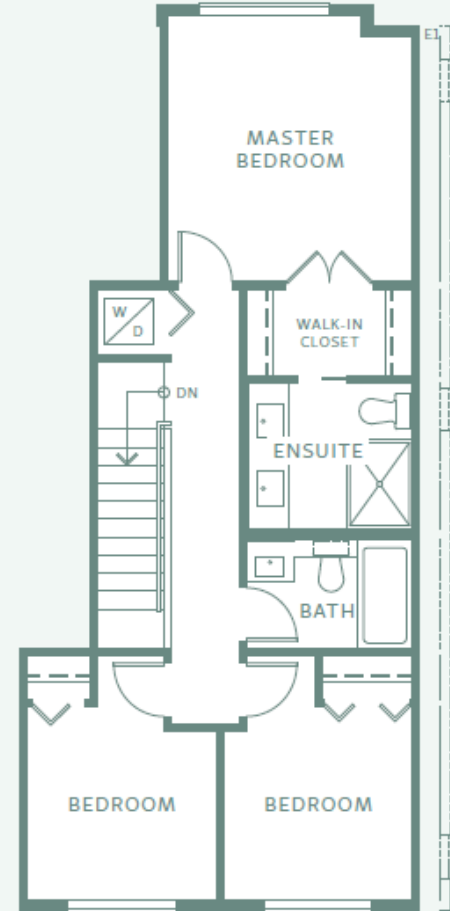
 **thetownhouseguy.ca**
...a fresh approach to real estate



LOWER FLOOR



MAIN FLOOR



UPPER FLOOR



ROUNDHOUSE

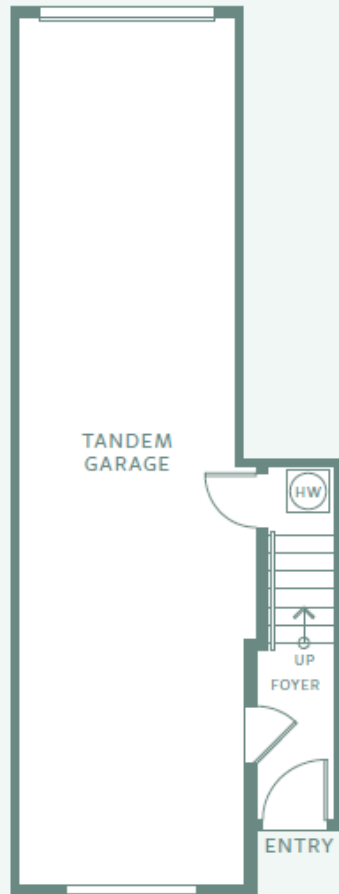
PLAN F/F1

3 BEDROOM | 2.5 BATHROOM

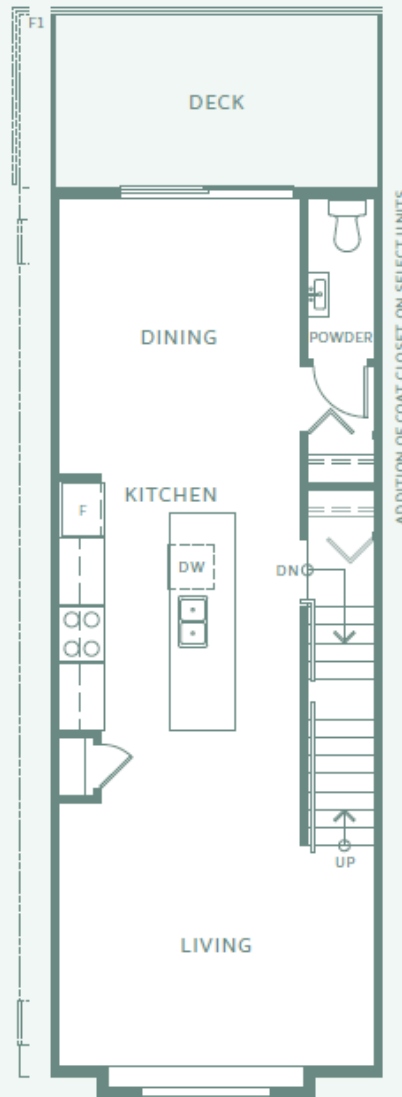
TOTAL 1,341 - 1,355 SQ FT

Call Trevor
604-761-1380

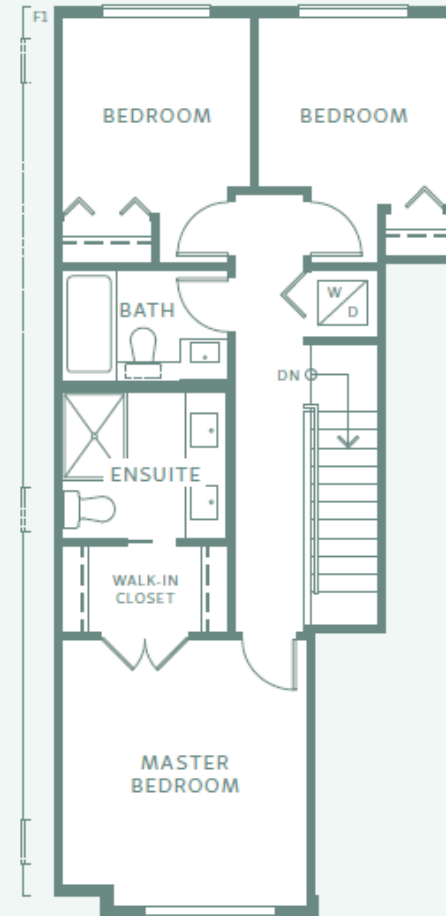
 **thetownhouseguy.ca**
...a fresh approach to real estate



LOWER FLOOR



MAIN FLOOR



UPPER FLOOR



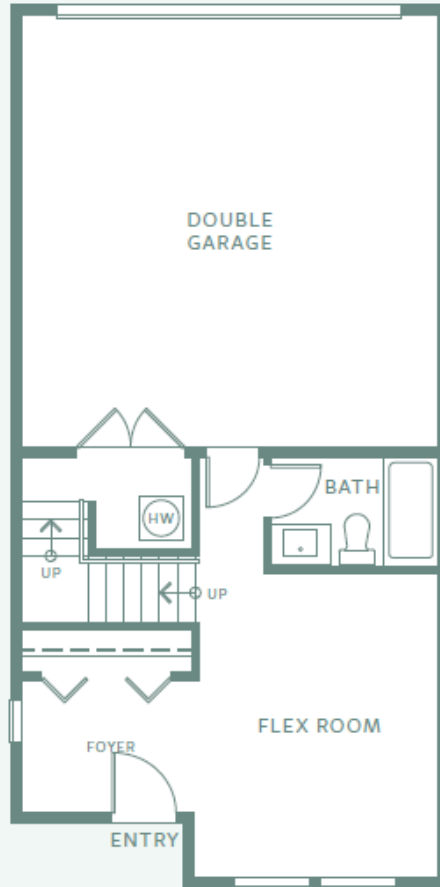
ROUNDHOUSE

PLAN G

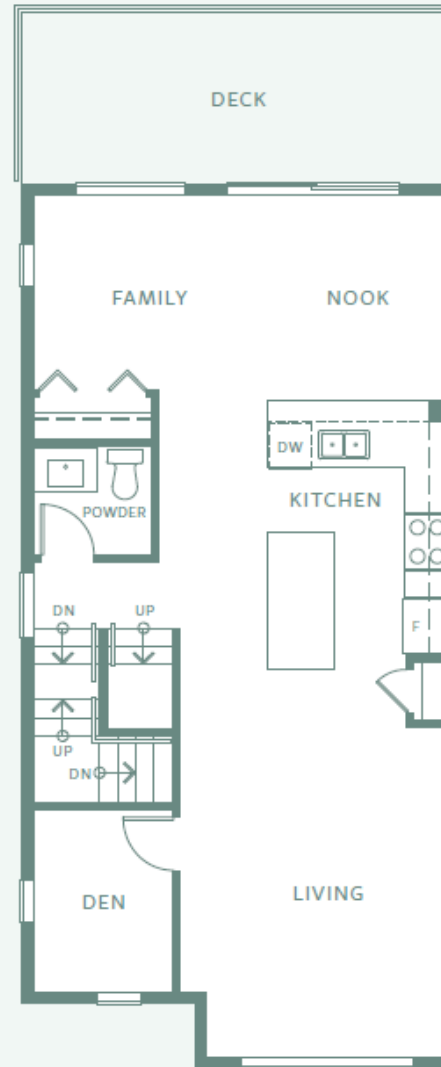
3 BEDROOM + FLEX + DEN | 3.5 BATHROOM
TOTAL 1,995 SQ FT

Call Trevor
604-761-1380

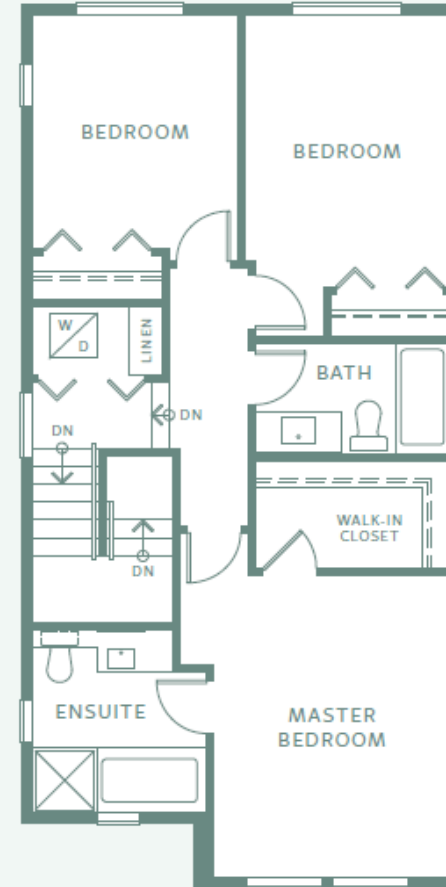
 **thetownhouseguy.ca**
...a fresh approach to real estate



LOWER FLOOR



MAIN FLOOR



UPPER FLOOR

