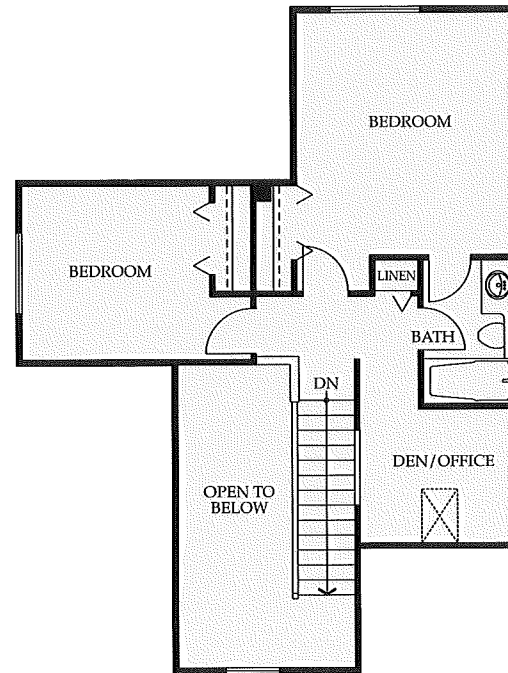


MAIN FLOOR



UPPER FLOOR



THE ASHDOWNE

Plan A - 1,865 sq. ft.

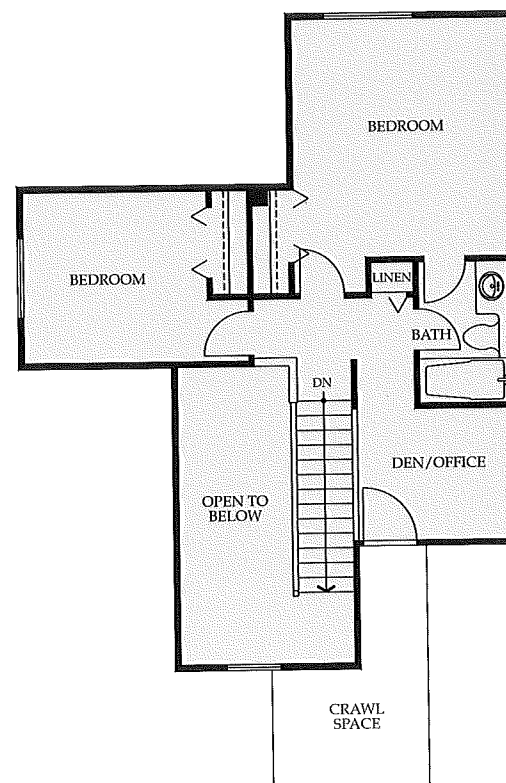
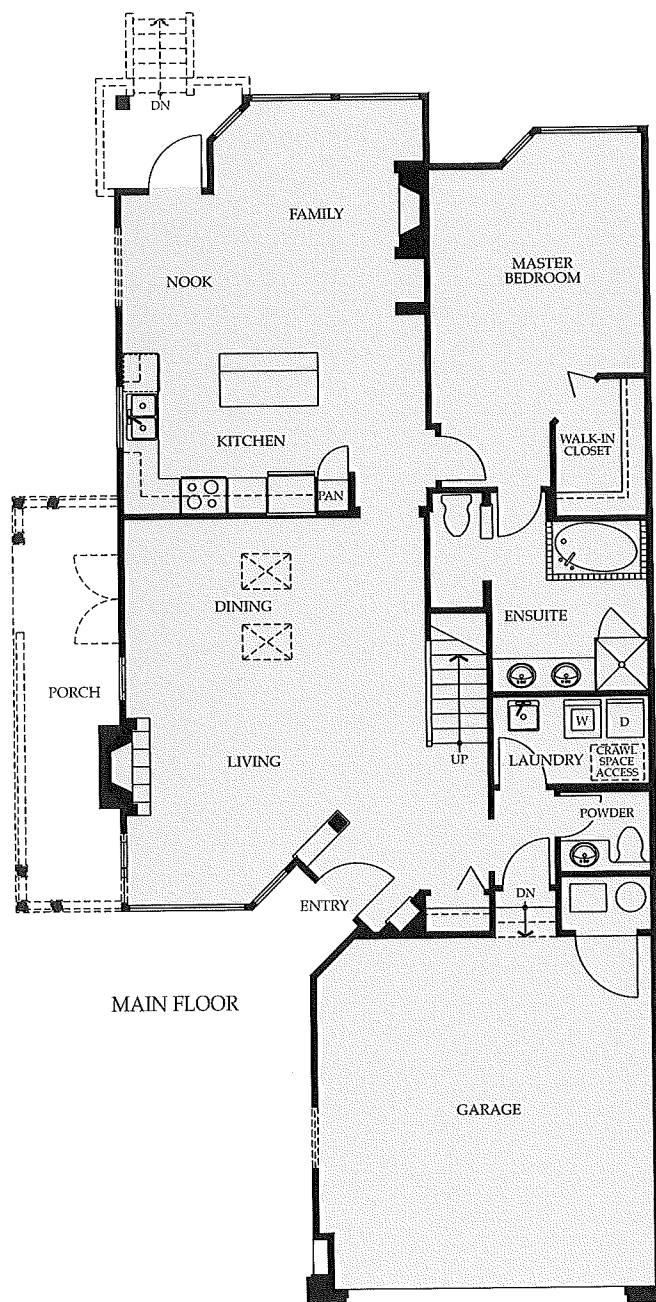
Step into an elegant entry foyer accented by Italian ceramic tile floors and a sculpture niche. Double-height vaulted ceilings over the living and dining areas create a dramatic space for social gatherings, complete with skylights that fill the dining room with sunshine. The bright, contemporary open-plan kitchen faces a cosy breakfast nook and fireside family room, opening to the patio and fenced backyard. A convenient work island doubles as an eating bar, where guests can sip drinks and chat with the chef. A luxuriously appointed master bedroom rounds out the main level. The second level offers two additional bedrooms and a bright skylight den overlooking the living areas below.



THE ASHDOWNE

Plan A1,A3 - 1,865 sq. ft.

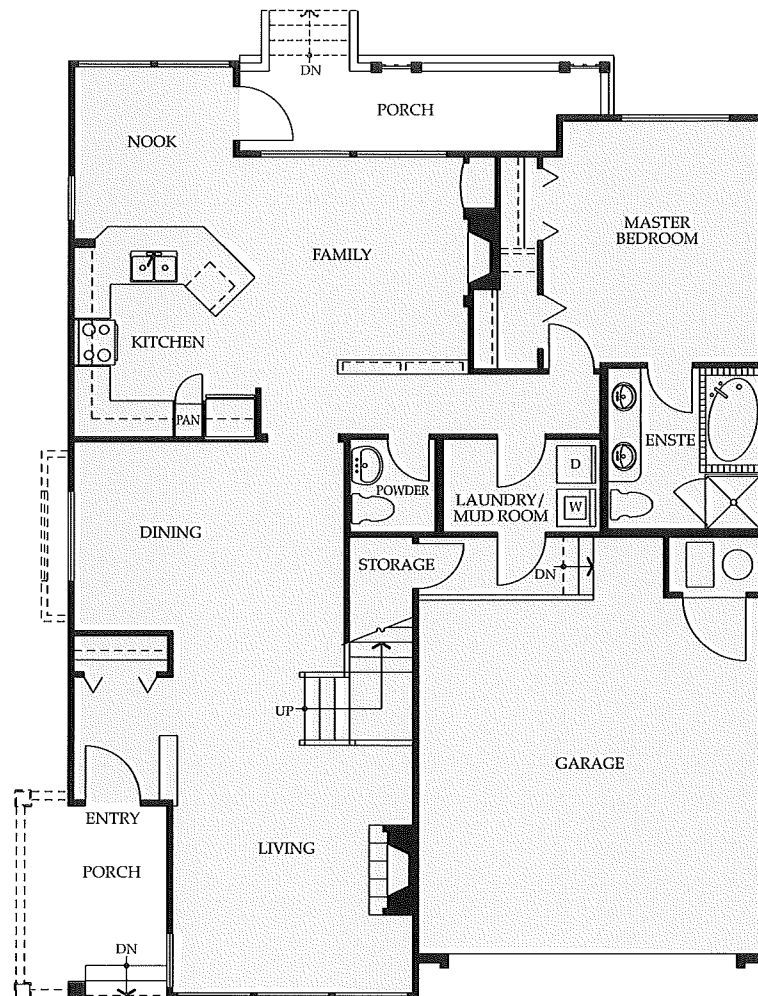
Step into an elegant entry foyer accented by Italian ceramic tile floors and a sculpture niche. Double-height vaulted ceilings over the living and dining areas create a dramatic space for social gatherings, complete with skylights that fill the dining room with sunshine. The bright, contemporary open-plan kitchen faces a cosy breakfast nook and fireside family room, opening to the patio and fenced backyard. A convenient work island doubles as an eating bar, where guests can sip drinks and chat with the chef. A luxuriously appointed master bedroom rounds out the main level. The second level offers two additional bedrooms, a bright den overlooking the living areas below and additional storage space.



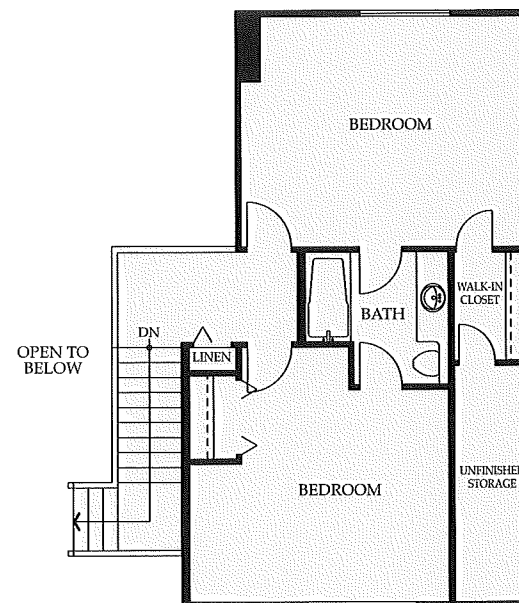


THE BURLINGTON

Plan B - 2,025 sq. ft.



MAIN FLOOR



UPPER FLOOR

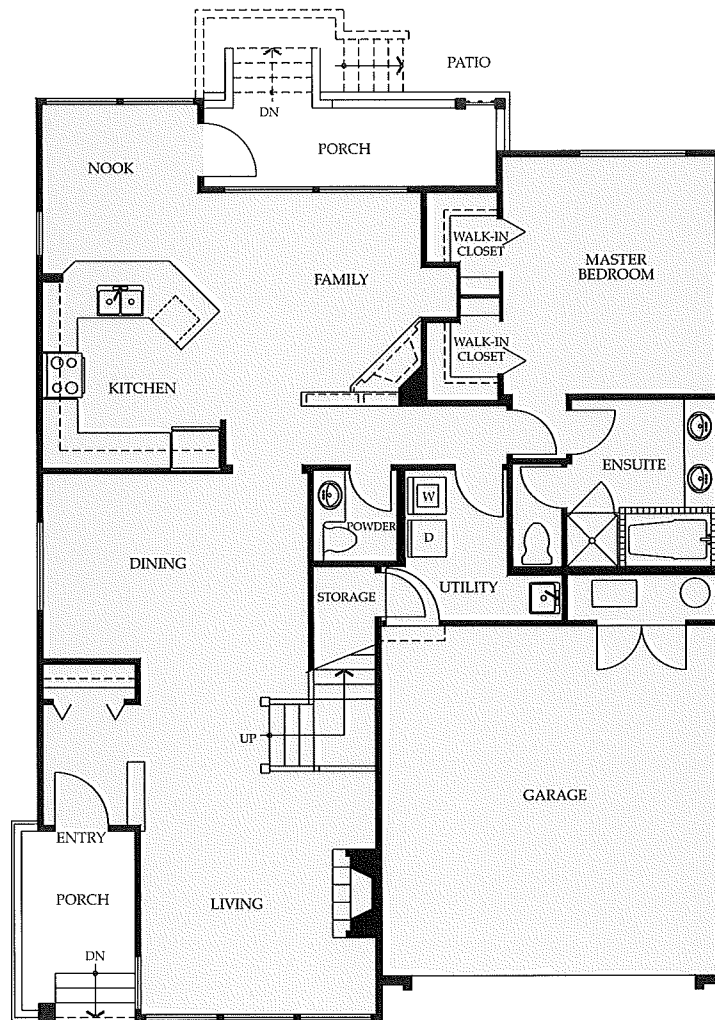
The spacious sun-filled Burlington home blends traditional style and contemporary flair. A cross-hall plan creates formal dining and living areas, both crowned with dramatic double-height vaulted ceilings. Front and back porches lend old-fashioned warmth, and a cosy family room invites quiet evenings by the fire. The beautifully appointed main-level master bedroom features his and hers closets, and an opulent ensuite with a deep soaker tub and walk-in shower. The bright kitchen is fitted with Shaker cabinetry, Mexican ceramic tile and an eating bar. For extra convenience, the Burlington offers direct access from the garage through a laundry/mud room. The Burlington's upper level includes plenty of flexible space: two full-size bedrooms share an ensuite bath, and a large storage area.



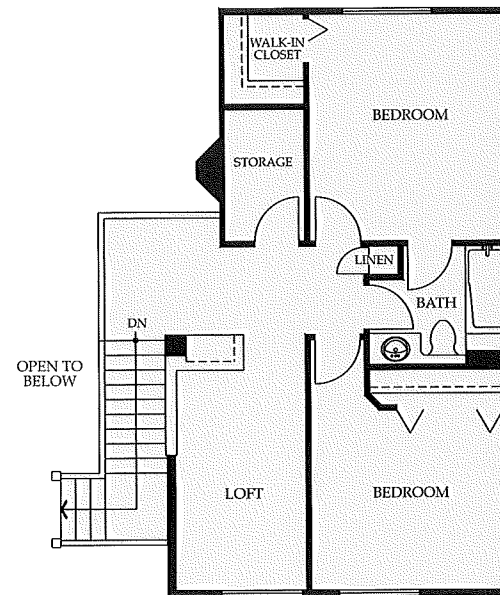
THE BURLINGTON

Plan B2 - 2,075 sq. ft.

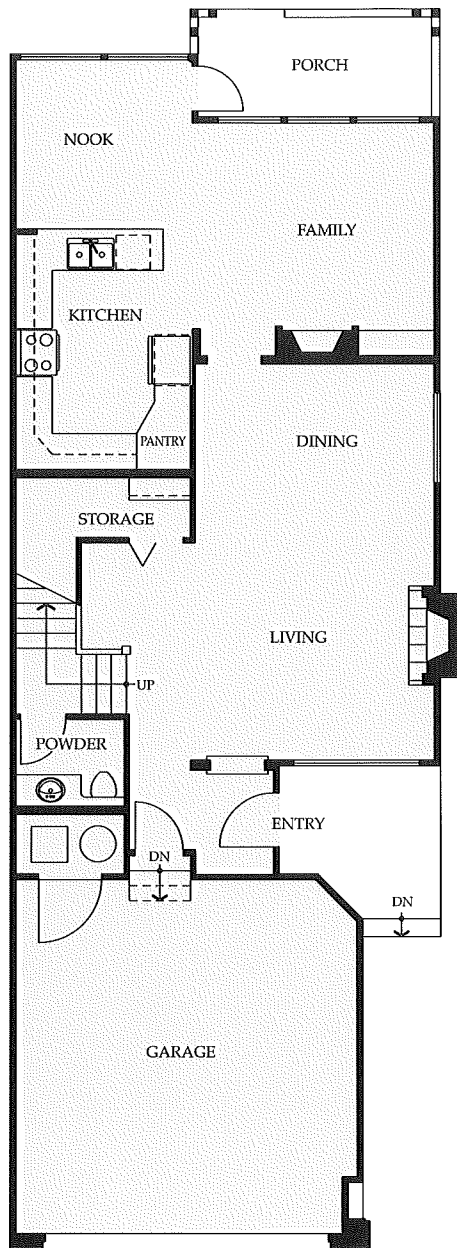
The spacious sun-filled Burlington home blends traditional style and contemporary flair. A cross-hall plan creates formal dining and living areas, both crowned with dramatic double-height vaulted ceilings. Front and back porches lend old-fashioned warmth, and a cosy family room invites quiet evenings by the fire. The beautifully appointed main-level master bedroom features his and hers closets, and an opulent ensuite with a deep soaker tub and walk-in shower. The bright kitchen is fitted with Shaker cabinetry, Mexican ceramic tile and an eating bar. For extra convenience, the Burlington offers direct access from the garage through a laundry/mud room. The Burlington's upper level includes plenty of flexible space: two full-size bedrooms, bathroom, a large storage area, and a loft area perfect for a home office.



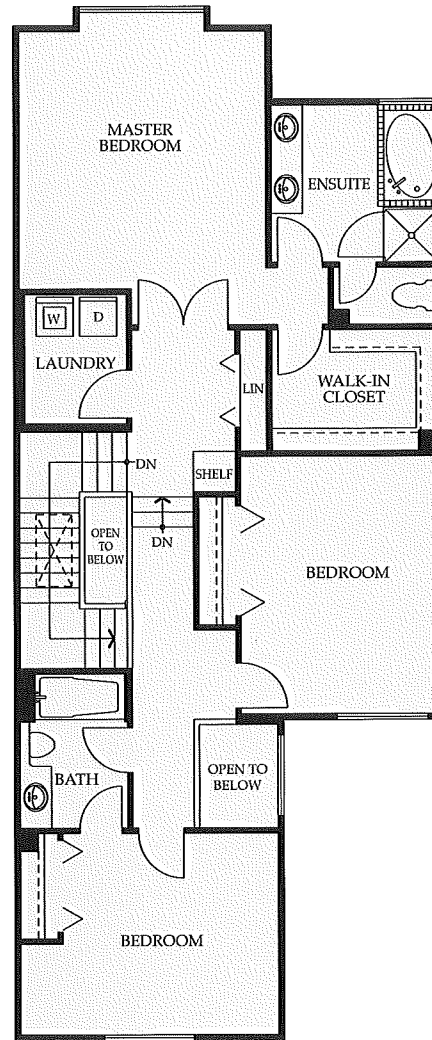
MAIN FLOOR



UPPER FLOOR



MAIN FLOOR



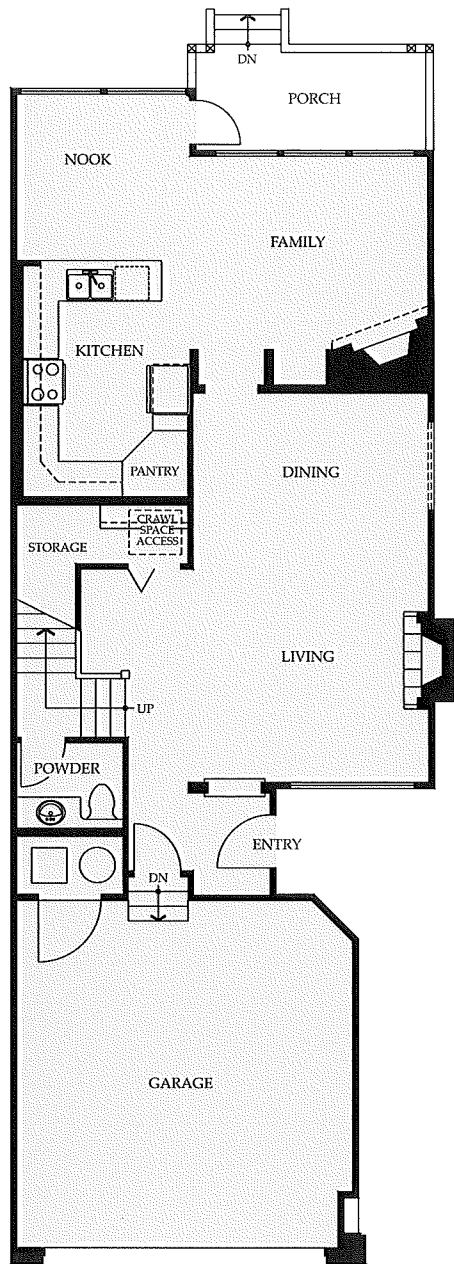
UPPER FLOOR



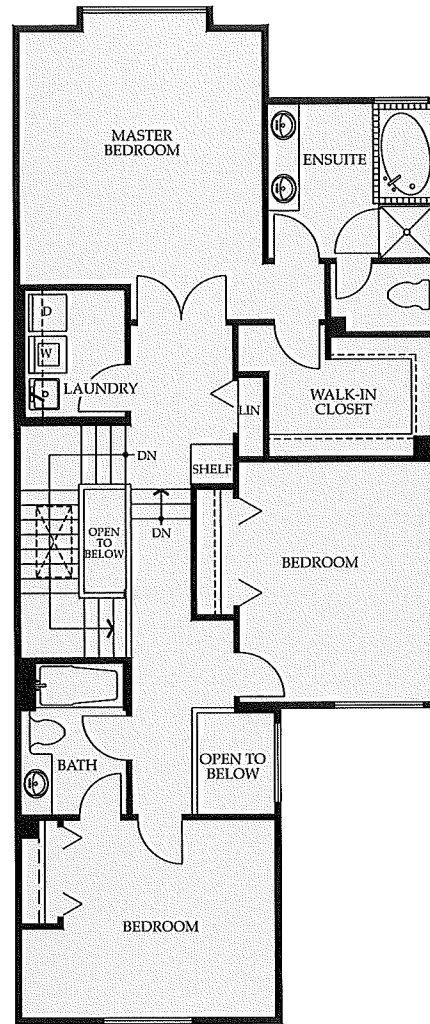
THE SCARBOROUGH

Plan C - 2,085 sq. ft.

The spacious Scarborough home welcomes you into a foyer featuring Italian ceramic tile floors and a sculpture niche, leading straight into the dramatic living and dining rooms crowned by coffered ceilings. Elegant fireplaces with traditional wood mantels bring warmth to both the family room and living room. The gourmet kitchen offers every convenience, including a full-height pantry and halogen accent lighting. An adjoining breakfast nook opens onto a private back patio and yard. Upstairs, the spacious master suite offers a huge walk-in closet and an opulent ensuite with separate water closet area, deep soaker tub and walk-in shower. Guests enjoy privacy in two large bedrooms, one with an ensuite bath.



MAIN FLOOR



UPPER FLOOR



THE SCARBOROUGH

Plan C3 - 2,085 sq. ft.

The spacious Scarborough home welcomes you into a foyer featuring Italian ceramic tile floors, leading straight into the dramatic living and dining rooms crowned by coffered ceilings. Elegant fireplaces with traditional wood mantels bring warmth to both the family room and living room. The gourmet kitchen offers every convenience, including a full-height pantry and halogen accent lighting. An adjoining breakfast nook opens onto a private back patio and yard. Upstairs, the spacious master suite offers a huge walk-in closet and an opulent ensuite with separate water closet area, deep soaker tub and walk-in shower. Guests enjoy privacy in two large bedrooms, one with an ensuite bath.